

# Hewsaw Knife Grinder



*The Williams & White CKG/  
EKG Knife Grinder is designed  
specifically for Hewsaw small  
log lines. The innovative design  
allows 24-48 knives to be  
sharpened simultaneously  
depending on jig options.*

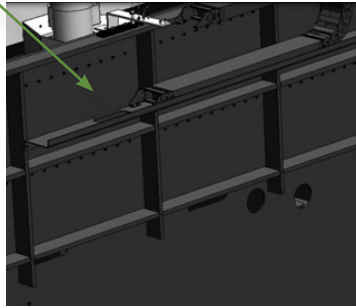
## Highlights

- ✓ Precision linear rails
- ✓ PLC control
- ✓ Compound angle Jig
- ✓ Precision linear bearing design
- ✓ Washdown hose
- ✓ Variable carriage speed adjustment
- ✓ Height adjustable Jig
- ✓ CNC downfeed/travel
- ✓ CNC control

## Key Features

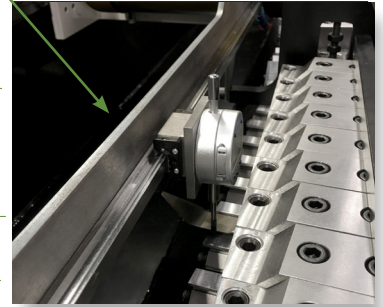
### Heavy duty stress-relieved frame

- + The heavy duty, vertically re-inforced frame reduces harmful vibrations, flexing and distortion.



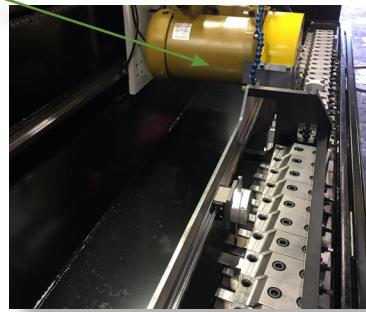
### Adjustable Jig with 36 knife capacity

- + Our adjustable knife Jig allows each of the 36 knives to be individually positioned, eliminating the need to set the Jig to the most worn knife. This control significantly increases the lifespan of each knife, and is not available on standard rotary grinders.



### 24-36 Knife-jig

- + The Williams & White EKG/CKG has a 24-36 Knife capacity to maximize the efficiency of your operation. This feature is exclusive Williams and White EKG/CKG grinders and cannot be found in the standard rotary grinders (which hold just 12 knives).



## CKG Chipping Knife

- + **36 knife capacity**
- + **2-3 hour sharpening cycle**
- + **Adjustable knife Jig**
- + **Welded box-frame construction**
- + **Precision linear rails**
- + **Micro down-feed**
- + **Sharpens knives back to factory standards**

## EKG Edging Knife

- + **24 knife capacity**
- + **2-3 hour sharpening cycle**
- + **Heavy duty frame**
- + **Precision linear rails**
- + **Micro down-feed**
- + **Sharpens knives back to factory standards**

## Specifications

Spindle Motor RPM	1725 RPM	1725 RPM
Ship weight	4800lb	2177kg
Coolant tank capacity	130L	130L
Voltage	480Vac, 3ph, 6Hz	480Vac, 3ph, 6Hz
Power	6kVA	6kVA
Power per spindle	7.5Hp	5.5kW