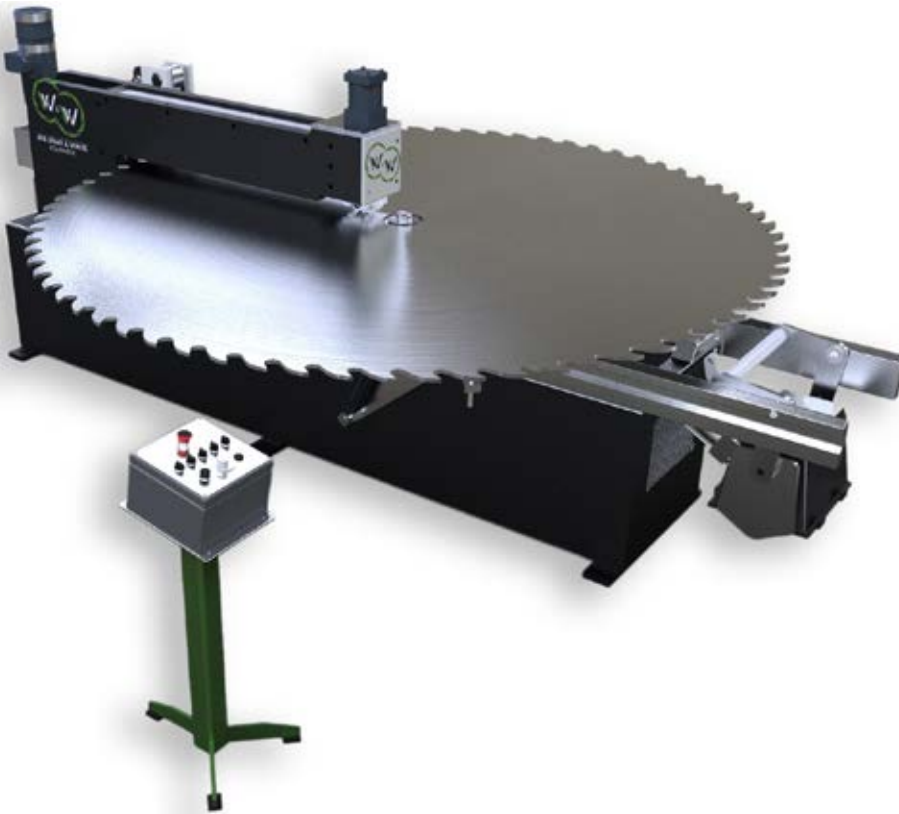




Round Saw Center



The Williams & White Round Saw Center is the ultimate Stretcher roll, designed to load and repair large diameter saws in the safest way possible. Hydraulic loading allows for efficient saw handling while ensuring safety by eliminating heavy lifting and dangerous maneuvers

Highlights

- ✓ **Hydraulic saw loading system** → load large diameter saws with ease
- ✓ **Heavy duty all steel construction** → robust design is built to last
- ✓ **Patented Dish-O-Matic system reduces need for heavy hammering** → tension & level saw on one machine
- ✓ **Floating anvil for hammering (60Rc)** → tension & hammer on the same machine
- ✓ **Hydraulic roll pressure** → reduces heavy saw hammering

Key Features

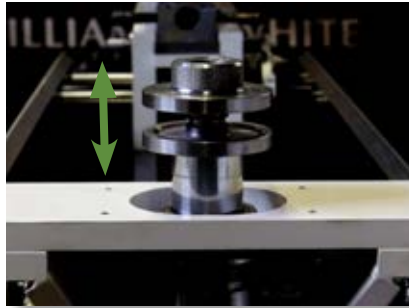
Dish-O-Matic roll system

- + For precise tensioning and leveling on one machine. The DOM II roll system allows the filer to tension and level the saw with one machine.
- + Off-set roll diameter for unobstructed tensioning.



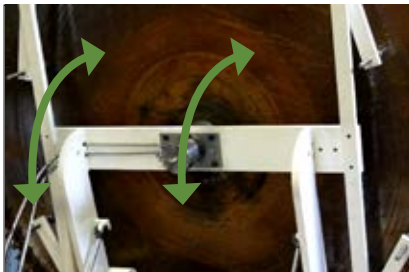
Hydraulic spindle lift

- + The hydraulic spindle lift (option) shuttles the spindle up and down to lower it from the saw eye. This enables filers to slide the saw further back to make repairs in close proximity to the saw eye.



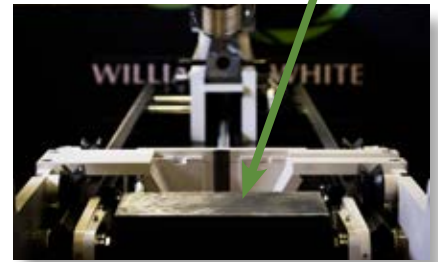
Vertical loading system with hydraulic lift

- + For improved safety and easy loading of large diameter saws.



Floating saw anvil

- + The Williams & White Round Saw Center is the only large saw stretching machine with a floating anvil. This enables filers to hammer the saw without transferring to a benching station.



Options

Variable speed rolls

Customize roll speed for your operation.

Hydraulic tooth setter

Integrated into the machine to set kerf automatically

Heavy duty (HD) models are available for extra thick saws and heavy production

Models

#72 RSC

(manual, semi hydraulic, fully hydraulic options) Up to 72" diameter saws

#108 RSC

(manual, semi hydraulic, fully hydraulic options) Up to 108" diameter saws

#120 RSC

(completely hydraulic) Up to 120" diameter saws

Specifications

Circle saw capacity	Up to 120" (dependent on model)	914mm (dependent on model)
Plate thickness	Up to 1/2" thick (standard model)	Up to 12.7mm thick (standard model)
Dimensions	H:59" L: 173" W:108"	H:1498x L:4394mm W:2743mm
Standard roll radius	6"	150mm
Shipping weight	2,600lb-5,500lb	1,496kg-2,500kg
Voltage	480 Vac, 3 Ph, 60Hz,	400 Vac, 3 Ph, 50Hz,
Power	4kVA	4kVA

Williams and White reserves the right to alter or amend specifications without prior notice