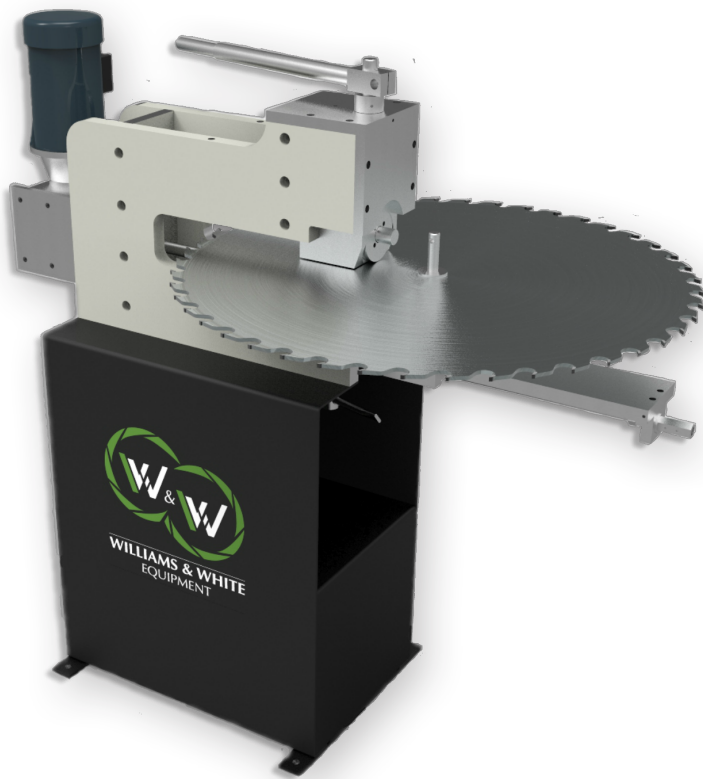




WILLIAMS & WHITE
EQUIPMENT

Dish-O-Matic Round Saw Stretcher Roll



The Williams & White Dish-O-Matic Stretcher Roll is essential in all saw production and maintenance facilities. The patented Dish-O-Matic system allows operator to tension and level saws in the most efficient and accurate manner. This machine is the most durable in the industry and is installed in thousands of filing rooms and saw shops worldwide.

Highlights

- ✓ **Heavy-duty C-frame construction** → robust design is built to last
- ✓ **Smooth moving easy slide system** → high-precision roll placement
- ✓ **Patented Dish-O-Matic system** → saw tensioning & leveling on one machine
- ✓ **Manual or hydraulic roll pressure** → reduces heavy saw hammering
- ✓ **Foot pedal saw rotation** → for simple operation



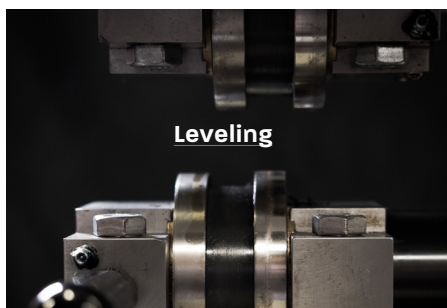
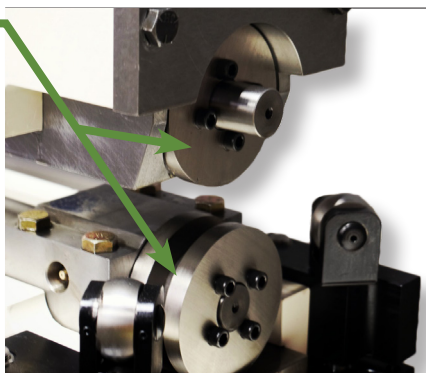
Sales@williamsandwhite.com
www.williamsandwhiteequipment.com

CALL US NOW
+1 604-293-2268
TOLL FREE: 1-888-293-2268

Key Features

Dish-O-Matic system

- + Patented Williams & White Dish-O-Matic Stretcher Roll allows the operator to tension and level the blade in one setup.
- + The system requires approximately 80% less hammering when compared to the leading competitors' manual circular saw stretchers.



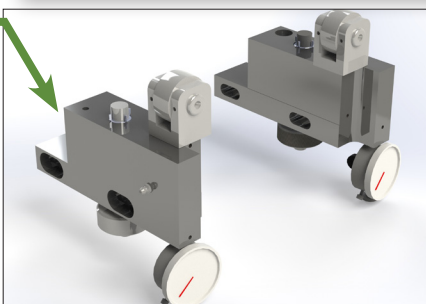
Leveling



Tensioning

NEW #36 de-kinker rolls

- + Simple bolt on upgrade for your stretcher roll (Armstrong or Williams and White).
- + Heavy duty
- + Hardened rolls
- + Dial indicator adjustments



Models

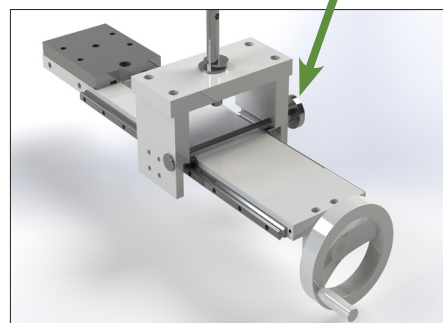
#36 Stretcher	Up to 36" diameter
#72 Stretcher	Up to 72" diameter
#108 Stretcher	Up to 108" diameter
#120 Stretcher	Up to 120" diameter

Options

- + Digital pressure gauge
- + Hydraulic roll pressure
- + Strobe sensor
- + Variable speed rolls

NEW Easy-slide (#36 stretcher)

- + Conversions available for any stretcher roll.
- + Can be added to any Williams & White #36 Stretcher.
- + The system allows the saw to move in and out of the rolls smoothly resulting in accurate and efficient saw positioning.
- + The easy-slide is included on all new #36 models and can be retrofitted to any existing Williams & White #36 Stretcher roll machine.
- + Heavy duty
- + Linear rail guides
- + Linear precision brake



Specifications

Circle saw capacity	8"-120" (dependent on model)	203mm-3,048mm (dependent on model)
Plate size	0.25" -0.4"	6.35mm-10mm
Standard roll radius	6"	150mm
Weight	850lb-1500lb	385kg -680kg
Dimensions	H: 52" W: 20" L:56"	H:20mm W:51mm L:1412mm
Voltage	480 Vac, 3 Ph, 60Hz	400 Vac, 3 Ph, 50Hz
Power	3kVA	3kVA

Williams and White reserves the right to alter or amend specifications without prior notice



Sales@williamsandwhite.com
www.williamsandwhiteequipment.com

CALL US NOW

+1 604-293-2268
TOLL FREE: 1-888-293-2268