



**WILLIAMS & WHITE**  
EQUIPMENT

# CNC Top & Face Grinder TFX



*The Accusharp TFX Is a fully enclosed automatic top and face grinding machine for circular saw blades up to 36" (Optional 42") diameter. The automatic CNC operation allows the operator to continue his/her work as the machine sharpens the saws. Multi pass grinding and program saving make the TFX the ideal machine for any production or repair facility.*

## Highlights

- ✓ **Automatic operation with tooth counter** → For flexible and efficient operation
- ✓ **High precision bearings and linear slides** → For extreme accuracy
- ✓ **CNC multi pass grinding** → Increased accuracy and grind finish
- ✓ **CNC feed finger system** → Variable tooth pitch
- ✓ **CNC servo motion system** → Consistent and reliable positioning



Sales@williamsandwhite.com  
www.williamsandwhiteequipment.com

**CALL US NOW**  
+1 604-293-2268  
TOLL FREE: 1-888-293-2268

## Key Features

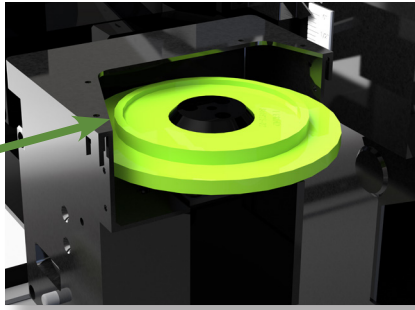
### Variable pitch

- + CNC axis for variable pitch saws.



### Back to back facing and topping grinding wheels

- + Switch from facing to topping without doing a wheel change saving you time in your operations.
- + Wheel lift-off



### CNC controlled

- + Full programmability of complex tooth shapes.



### Heavy duty construction

- + Williams and White machines are known for extreme durability and reliability.

### Grinding feed adjustment

- + Allows you to adjust your feed rate regulating your grinding speed.
- + In and out feeds are independently adjustable.

## Tooth Styles

- ✓ Straight facing
- ✓ Straight topping
- ✓ Alternate facing
- ✓ Alternate topping
- ✓ Triple chip (single pass)
- ✓ High/low topping

## Other Features

- ✓ Adjustable saw clamps
- ✓ Centralized lubrication (manual)
- ✓ 1 HP grinding motor
- ✓ CE/CSA/UL Standard

## Standard Specifications

Saw Diameter	3.5" – 36" (Optional 42")	80 mm – 920 mm (Optional 1,060 mm)
Clearance Angle	-10° - +40°	-10° - +40°
Plate Thickness	Up to .400"	Up to 10 mm
Back bevel grinding at tooth top	To 45°	To 45°
Saw Kerf	.040" - .400"	1 mm - 10 mm
Bevel grinding at tooth face	To 45°	To 45°
Grinding Path	To .250"	To 6 mm
Power Requirements	380V 3ph	380V 3ph
Face Grinding Wheel	6.3" dia. x 1-1/4" bore	160 mm dia x 32 mm bore
Top Grinding Wheel	4" dia. x 1-1/4" bore	101 mm dia x 32 mm bore
Footprint	80" x 44" x 80H"	203 cm x 112 cm x 203H cm
Coolant Capacity	21 Gal	80 lt
Shipping Weight	2,500 lbs	1,150 kg



Sales@williamsandwhite.com  
www.williamsandwhiteequipment.com

**CALL US NOW**  
**+1 604-293-2268**  
**TOLL FREE: 1-888-293-2268**