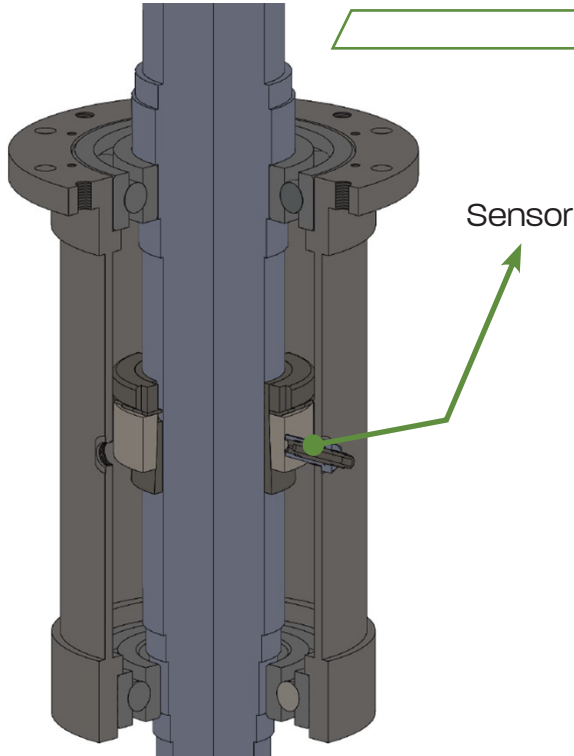




# Saw ADD™ The Smart Arbor Solution



*Williams and White is excited to offer Saw-ADD™ to the sawmill industry as part of the Smart Arbor Solution.*

*Round Saw-ADD™ is a patent pending integration of force sensors on the saw arbor, measuring the radial forces on the round saw blades from the tooth cut and the guide friction.*

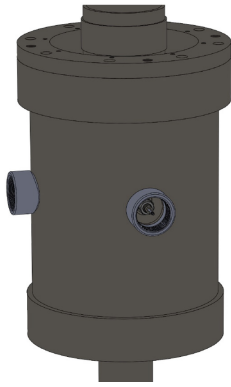
*This enables average feed speed increases up to 18% while automatically slowing only when necessary to preemptively reduce deviation, saw damage and stuck cants.*

## Highlights:

- ✓ **Saw-ADD™ is The only anti-deviation system available**
- ✓ **Software slows feed speed to stop deviation then returns to optimum speed**
- ✓ **Sensitive to radial forces half second before arbor current ; Slows feed speed to prevent deviation or damage**
- ✓ **Enables reducing target size for higher lumber recovery**
- ✓ **Extremely fast ROI**
- ✓ **Analog signal provided by Saw-ADD; Compatible with your PLC**
- ✓ **Measurement is zeroed between every cant**
- ✓ **HMI displays provide indication and adjustment for maximum saw and machine performance**

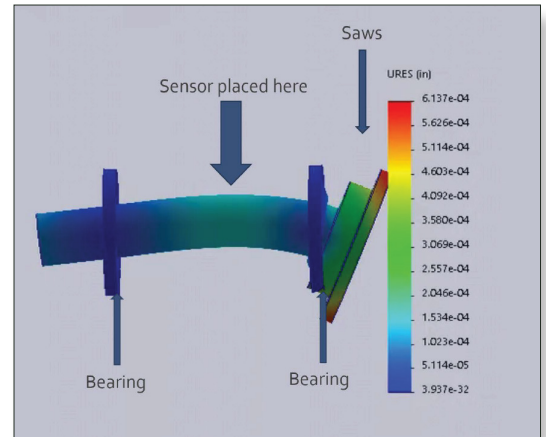


## Key Features

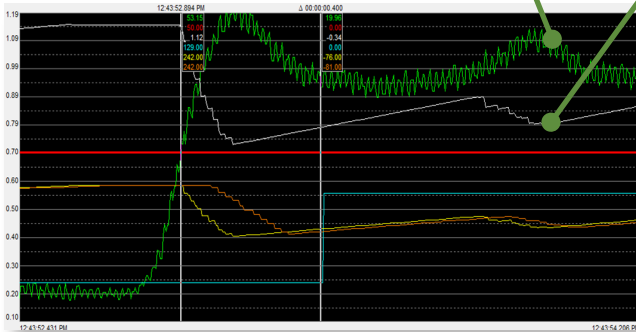


### Optimal 10 inch V-DAG

- + A target ring is added to the arbor shaft, between the bearings, with a taper-lock (shown above). Four Boss O-Ring fitting holes for sensors and pipe fitting access holes are added at 90 degrees.



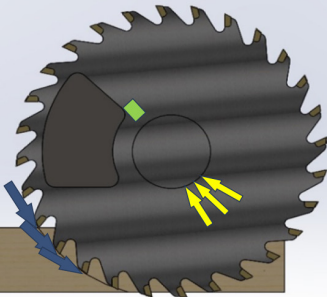
Arbor radial forces  
Saw-ADD™ speed command



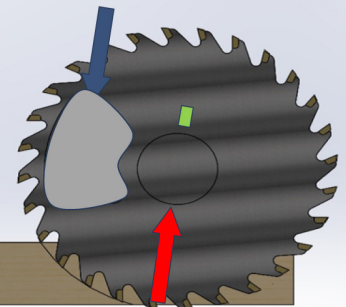
- + Saw-ADD™ reduces speed when the arbor pressure is high
- + Saw-ADD™ increases speed when the arbor pressure is low

**Proven in saw mill applications**

Saw-ADD™ measuring sawing Force



Saw-ADD™ measuring friction Force



## Benefits to the sawmill

- ✓ **Closed loop speed control** → Average feed speeds up to 18% higher
- ✓ **Higher Grade Lumber** → Higher value
- ✓ **Reduced Target Size** → \$300k - \$1M additional lumber value per year
- ✓ **Minimizes Deviation** → Less Planer Skip / Better finish
- ✓ **Minimize planer allowance** → While still increasing grade
- ✓ **Diagnostic Capabilities** → Determine or eliminate potential problem areas
- ✓ **Less Benching** → Less scheduled and unexpected saw changes
- ✓ **Less Saw Wrecks** → Less Down Time
- ✓ **Safety Benefits** → Less unexpected incidents

Williams and White reserves the right to alter or amend specifications without prior notice



Sales@williamsandwhite.com  
www.williamsandwhiteequipment.com

**CALL US NOW**  
**+1 604-293-2268**  
**TOLL FREE: 1-888-293-2268**