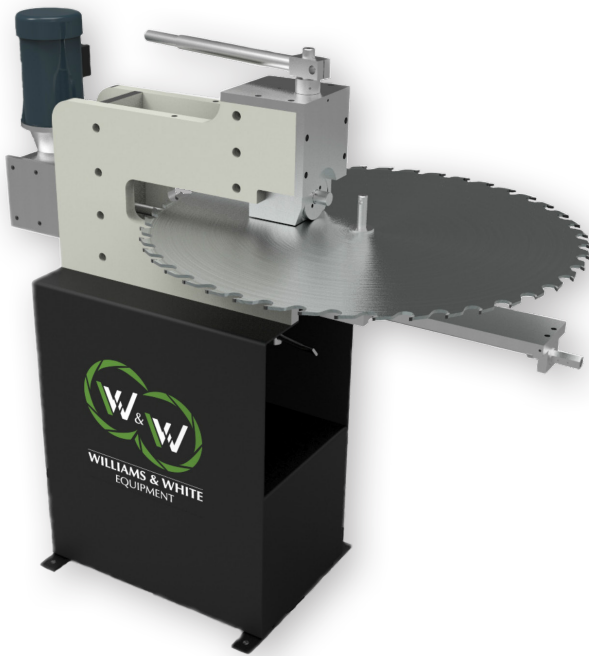




Dish-O-Matic Round Saw Stretcher Roll



The Williams & White Dish-O-Matic Stretcher Roll machine is essential in all saw production and maintenance facilities. The patented Dish-O-Matic system allows tensioning and levelling of saws in the most efficient and accurate manner. This machine is the most durable in the industry and is installed in thousands of filing rooms worldwide.

Highlights

- ✓ **Heavy-duty C-frame construction**
- ✓ **High-precision roll placement**
- ✓ **Patented Dish-O-Matic system**
- ✓ **Saw tensioning & leveling on one machine**
- ✓ **Eliminates heavy saw hammering**

Models

Stretcher #36.....Up to 36" diameter
Stretcher #72.....Up to 72" diameter
Stretcher #108.....Up to 108" diameter
Stretcher #120.....Up to 120" diameter

For bandsaw stretchers Visit our website

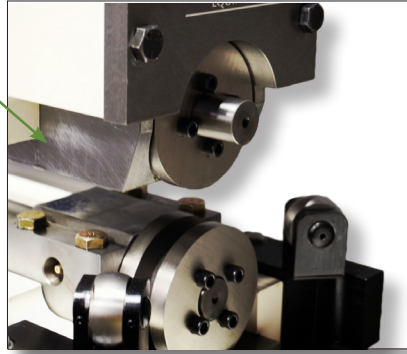
Options

- + Digital pressure gauge
- + Hydraulic machine actuation
- + Strobe sensor
- + Variable speed rolls
- + Easy-slide system

Key Features

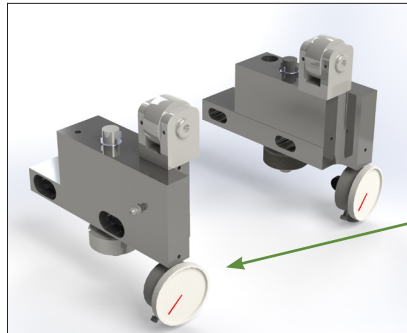
Dish-O-Matic system:

- + Patented Williams & White Dish-O-Matic Stretcher Roll allows the operator to tension and level the blade in one setup
- + The system requires approximately 80% less hammering when compared to the leading competitors' manual circular saw stretchers



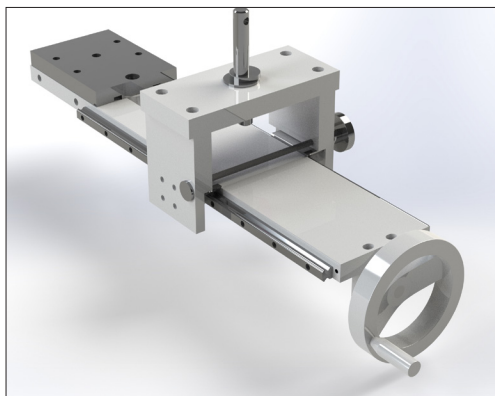
NEW Easy-slide (#36 stretcher)

- + Conversions available for any Stretcher Roll
- + Can be added to any Williams & White #36 Stretcher
- + The system allows the saw to move in and out of the rolls freely, resulting in accurate and efficient saw positioning.
- + The easy-slide is included on all new #36 models and can be retrofitted to any existing Williams & White #36 Stretcher Roll machine.
- + Super heavy duty
- + Linear rail guides
- + Linear precision brake



NEW #36 de-kinker rolls

- + Simple bolt on upgrade for your stretcher roll (Armstrong or Williams and White)
- + Super heavy duty
- + Hardened rolls
- + Dial indicator adjustable



Specifications

Circle saw capacity	8"-36"	203mm-914mm
Plate size	0.25" -0.4"	6.35mm-10mm
Standard roll radius	6°	6°
Weight	850lb-1500lb	385kg -680kg
Dimensions	H: 52" W: 20" L:56"	H:20mm W:51mm L:1412mm
Voltage	480 Vac, 3 Ph, 60Hz,	480 Vac, 3 Ph, 60Hz
Power	2kVA	2KVA