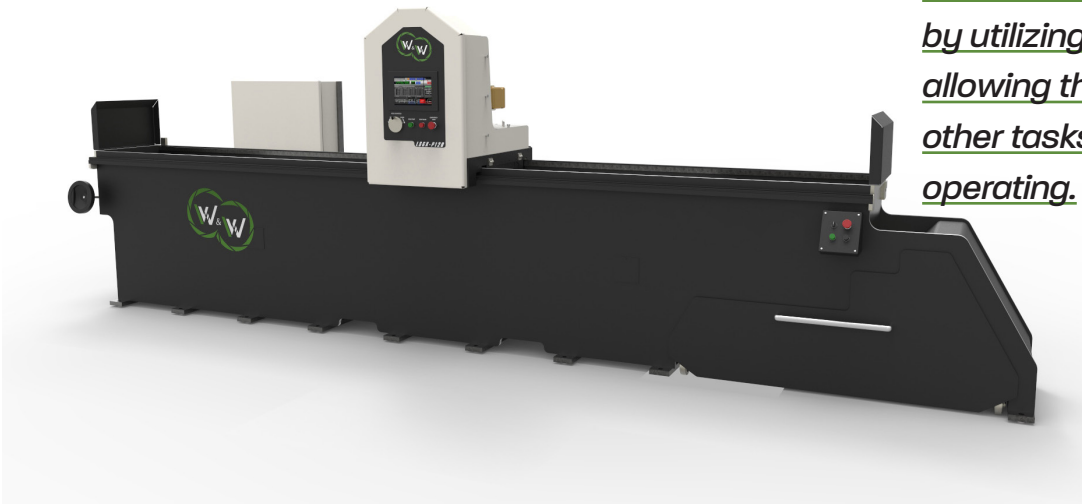




Knife Grinder LSGX-P / LSGX-D

The LSGX magnetic flat bed knife grinder is known for its robust power and ability to produce fine finishes under heavy cutting. This machine increases production by utilizing automatic grinding, allowing the operator to focus on other tasks while the machine is operating.



Highlights

- ✓ **Stress relieved heavy duty steel base** → minimises vibration which results in precise surface finishes makes work piece clamping and removal easy
- ✓ **Electromagnetic chuck with automatic demag cycle** → for efficient operation
- ✓ **CNC down feed and carriage travel** → for precise machine movements
- ✓ **Square rail linear bearings and turcite dovetail spindle slide** → for extreme machine accuracy
- ✓ **Thru spindle coolant** → for proper grinding temperature control



Key Features

Precision linear bearings

- + Williams & White's knife grinders are built using precision square-track rails and bearings. These superior components allow the carriage to travel with accuracy and create stability in xyz axes.

Heavy duty frame

- + Manufactured using heavy duty welded box frame construction to increase accuracy and minimize vibration.

Spark-out cycle to remove burrs at end of cycle.

Through spindle coolant

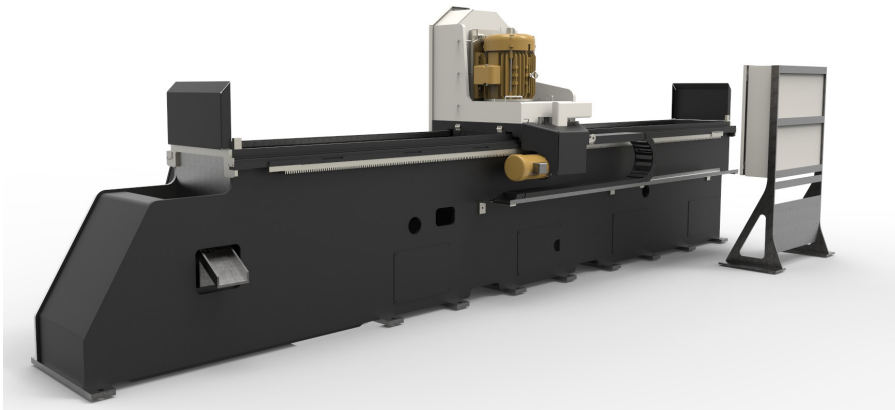
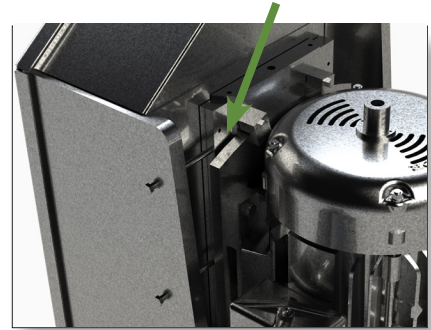
- + Full thru -spindle coolant ensures the right amount of coolant reaches the parts/ knives. This increases the life of the grinding stones and creates a smooth finish on the parts/ knives.

Quick change spindle

- + Williams & White's quick-change spindle system enables the operator to change the grinding stone with minimal downtime.

Dovetail spindle slide

- + The dovetail spindle slides found on Williams & White's knife grinder have larger contact areas than the leading competitors.
- + This provides higher stiffness and load-bearing capabilities, resulting in greater grinding consistency.



Options

Magnetic separator coolant tank with quick change fittings

- + Quick disconnect system: allows the user to disconnect coolant hoses to remove the coolant tank for cleaning and refilling.
- + A magnetic separator can also be added, which separates metal debris from contaminating the coolant.

Specifications

LSGX-P

Power requirements	480VAC, 3ph 60Hz, 30 KVA
Spindle motor	7.5HP/10HP/15HP (5.5kW/7.4kW/11kW)
Grinding wheel size	10" ring or 12" segmented wheel (254mm or 304mm)
Down feed Increments	.0005" - .003 (.01mm - .07mm)
Grinding wheel to surface clearance	5.25" (133mm)
Accuracy	.0005" per foot (.127mm per .304m)
Coolant capacity	160L
Weight	3,306lb (1,500kg) - 9,920lb (4,500kg) (depending on Lengths)
Magnetic surface area	6" (150mm) wide x grinder length
Frame plate thickness	3/4" (19mm)
Magnetic chuck	6" (152mm) magnetic chuck (+90 rotation)
Way cleaners	(option)
Touch screen	-
Program save function	-
Downfeed	CNC downfeed
Speed Carriage	2 Speed carriage

LSGX-D

Power requirements	480VAC, 3ph 60Hz, 30KVA
Spindle motor	10HP/15HP/25HP (7.4kW/11kW/18kW)
Grinding wheel size	10" ring or 12" segmented Wheel (254mm or 304mm)
Down feed Increments	.0001" - .005" (.0025mm - .127mm)
Grinding wheel to surface clearance	5.25" (133mm)
Accuracy	.0005" over 5 foot (.127mm over 1.524m)
Coolant capacity	160 L
Weight	5,511lb (2500kg) - 4,500lb (9920kg) (depending on Lengths)
Magnetic surface area	8" (200mm) wide x grinder length
Frame plate thickness	1" (25.4mm)
Magnetic chuck	8" (203mm) magnetic chuck (variable strength)
Way cleaners	Included
Touch screen	10" (254mm) touch screen
Program save function	Yes
Downfeed	Servo CNC downfeed
Speed Carriage	Variable speed carriage

Williams and White reserves the right to alter or amend specifications without prior notice



Sales@williamsandwhite.com
www.williamsandwhiteequipment.com

CALL US NOW
+1 604-293-2268
TOLL FREE: 1-888-293-2268