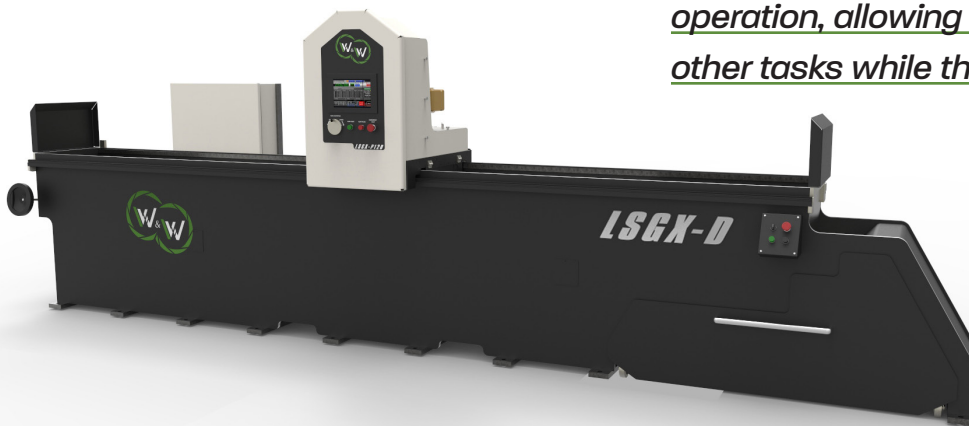




# Knife Grinder LSGX-D

A heavy-duty automatic Knife Grinder known for its robust power and ability to produce fine finishes under heavy cutting. The machine increases production by utilizing automatic operation, allowing the operator to focus on other tasks while the machine is operating.



## Highlights

- ✓ Welded box-frame construction.
- ✓ Electromagnetic Chuck.
- ✓ CNC down feed: .0001"-.005/pass with auto stop.
- ✓ Turcite dovetail spindle slide.
- ✓ User friendly touch screen UI.
- ✓ Heavy-duty frame.
- ✓ Quick change grinding wheel.
- ✓ Automatic demag cycle.
- ✓ Thru-spindle coolant.
- ✓ Separate coolant tank.
- ✓ 1 HP Rack and Pinion drive.
- ✓ Track precision linear bearings.



## Key Features

### Precision Linear Bearings

- Williams & White's knife grinders are built using precision square-track rails and bearings.
- These superior components allow the carriage to travel with accuracy and create stability in xyz axes.

### Heavy Duty Frame

- Manufactured using heavy duty welded box frame construction to increase accuracy and minimize vibration.

### Through Spindle Coolant

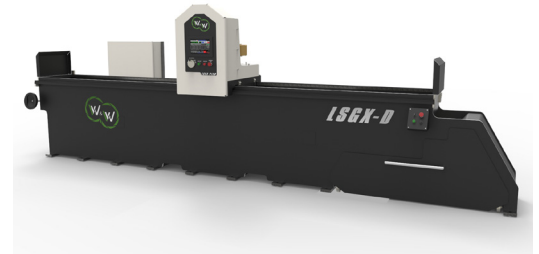
- Full-flood coolant incorporating side-coolant nozzles and full through-spindle coolant ensures only the right amount of coolant reaches the parts/knives.
- This increases the life of the grinding stones and creates a smooth finish on the parts/knives.

### Quick change Spindle

- Williams & White's quick-change spindle system enables the operator to change the grinding stone with minimal downtime.

## Technical Features

- **1" Frame Plate thickness.**
- **8" Magnetic Chuck (Variable strength).**
- **Variable Speed Carriage.**
- **10 HP Spindle Drive motor.**
- **Way Cleaners included.**



### Dovetail Spindle Slide

- The dovetail spindle slides found on Williams & White's knife grinder have larger contact areas than the leading competitors'.
- This provides higher stiffness and load-bearing capabilities, resulting in greater grinding consistency.

### Magnetic Separator Coolant Tank with quick change fittings

- Quick disconnect system: allows the user to disconnect coolant hoses to remove the coolant tank for cleaning and refilling.
- Magnetic separator can also be added, which separates metal debris from contaminating the coolant.

## LSGX-D

### Specifications

Power Requirements	460 V, 60A
Spindle Motor	10HP/15HP/25HP
Grinding Wheel Size	10" Wheel or 12" segmented Wheel
Down Feed Increments	0.0001" -.005
Grinding Wheel to surface clearance	5.25"
Accuracy	.0005" over 5'
Coolant Capacity	160 L
Weight	2500 lb - 4500lb (depending on Lengths)
Magnetic Surface Area	8" Wide x Grinder length

### Other Models

#### LSGX-P

- **3/4" Frame Plate thickness.**
- **6" Magnetic Chuck (+-90° rotation).**
- **2 Speed Carriage.**
- **7.5 HP Spindle Drive Motor.**
- **Way Cleaners available at extra cost.**

